



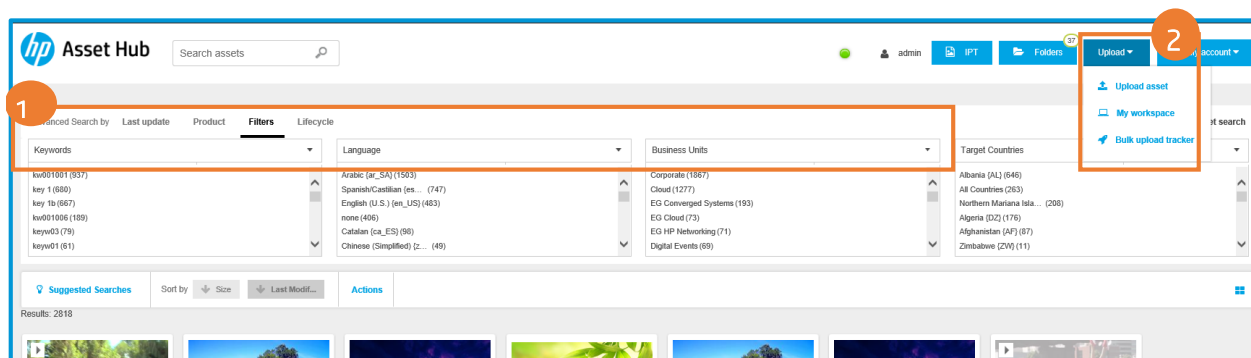
New Asset Hub Release

December 15, 2015

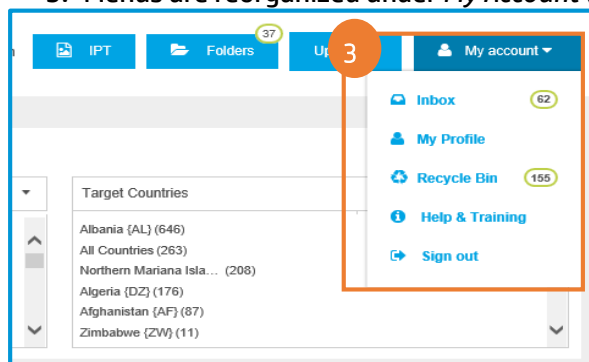
With the **HP Asset Hub 4.3** release you will see an improved interface and new features to help you easily identify and reuse marketing content.

Improved interface:

1. Advanced Search filters are now opened by default
2. Menus are reorganized under *Upload* (Upload & My Workspace)

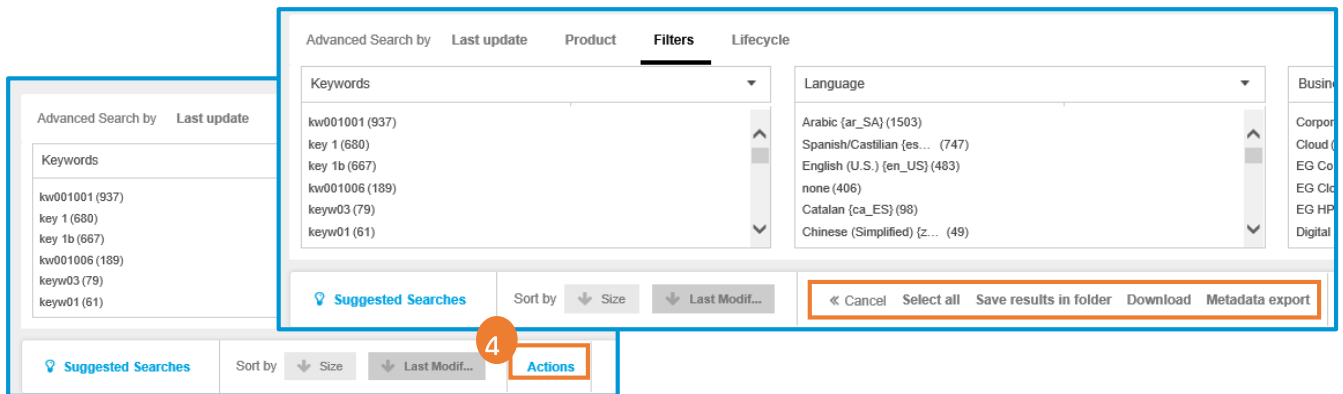


3. Menus are reorganized under *My Account* (Inbox, Profile, Recycle Bin, help & Training)

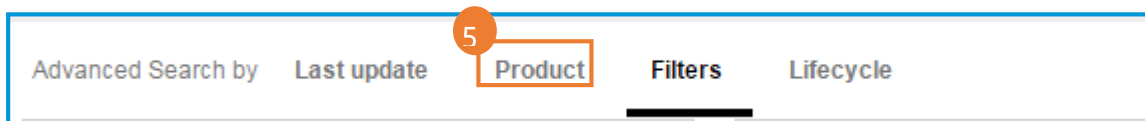


4. New **Actions** button that groups: *Select all, Save results to folder, Download options and Metadata Export* *.

*Subject to individual permissions, please contact Asset Hub support if you require this functionality.

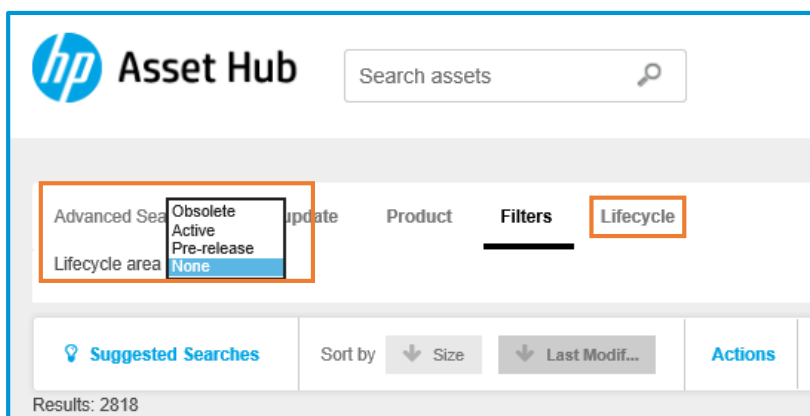


5. The “Product Browse” functionality is now found under Advanced Search by – Product.

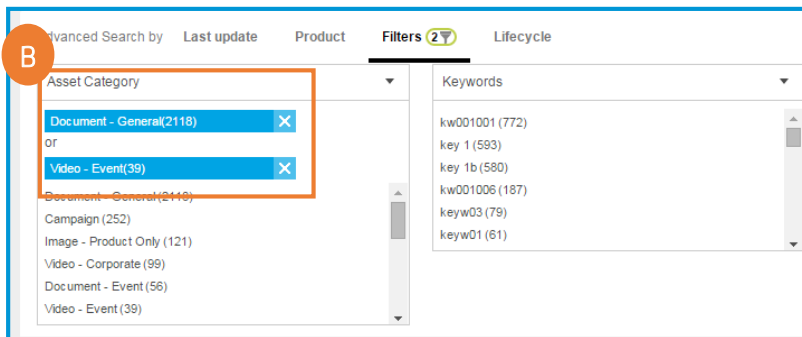
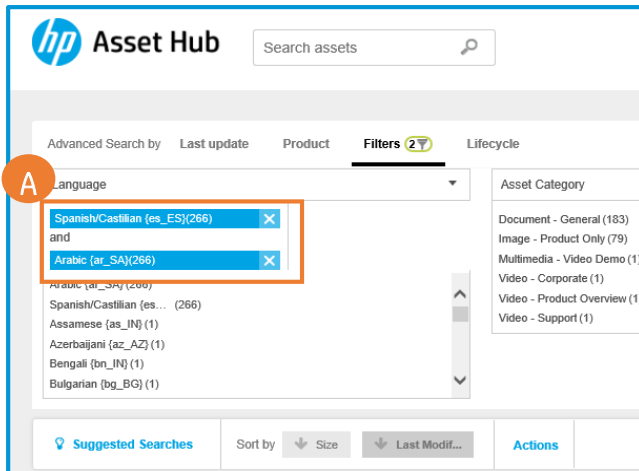


New features:

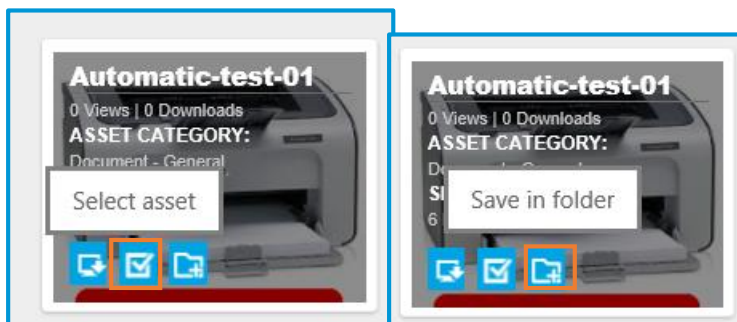
1. Filter your search by asset Lifecycle (for users with access to pre-released assets)



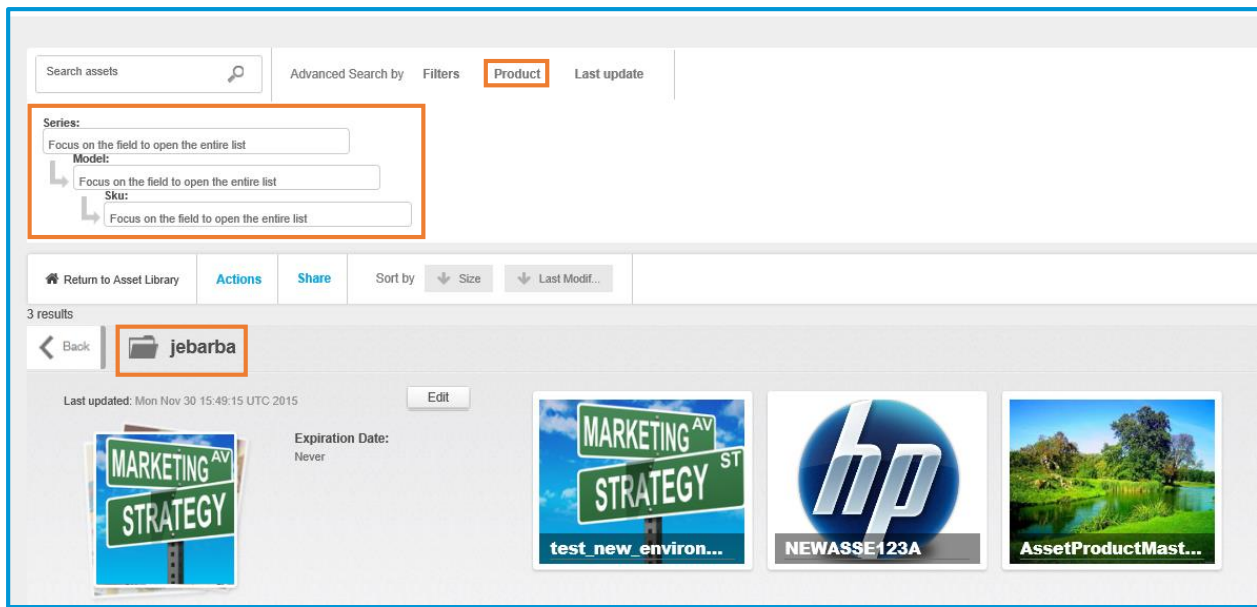
2. Choose more than one option for the same filter while using the Advanced Search. The filter will indicate whether **both** values are found in the field selected (“and” search, example A) or **either** value is found in the field selected (“or” search, example B).



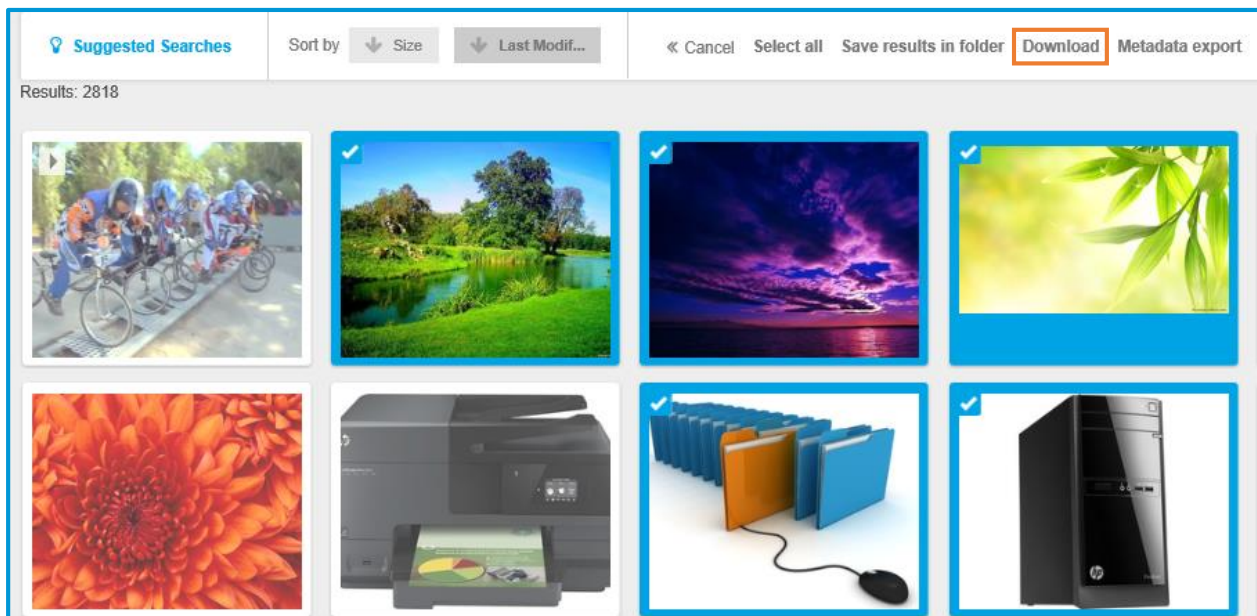
3. Save and send an asset to a folder from the Asset Overlay



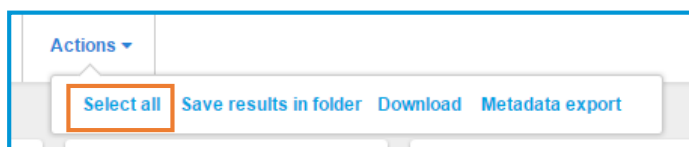
4. Use Advanced Search by product inside a folder



5. Download multiple files directly from the interface without adding to a folder first (select assets, click *Actions*, click *Download*).



6. Select all assets from a search in one quick click with a new *Select all* button located in the *Actions* menu.



Please note that we've also made the following updates:

1, In the “product” filter you will be able to see only products or series that have assets associated to them in Asset Hub.

2. “Anonymous” sharing is no longer default on folder creation. If you need to enable it you can update your folder settings at any time.

** Anonymous sharing allows you to provide direct links to an asset of a folder to users without an Asset Hub account. It applies only to public assets.*

3. Replacing the 8 keyframes, videos will now have a system-generated thumbnail taken from a first 15 seconds of the video.